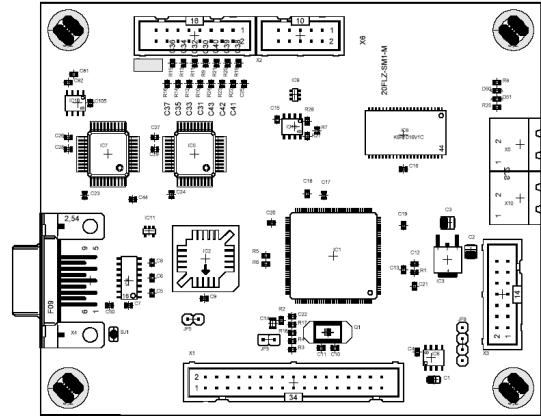


Technical description (Microprocessor Board)

Features:

- Fast using fixed-point DSP core ($\mu\text{P}/\mu\text{C}$ - Operation)
- Up to 40 MHz clock
- 1 Mbit external memory (expandable)
- Up to 8 external high precision ultra-fast AD converter:
 - $\pm 10\text{V}$
 - 14 bit significance
 - 2.4 μs Conversion Time, 350 kSPS max.
- 64Kx 16 Bit High-Speed CMOS Static RAM
- Connections:
 - Parallel, SPI/SCI, RS232, JTAG, CAN 2.0B
- Eight 16-Bit PWM Channels for inverter control
- PLL-based Clock Generation
- separate supply of analog and digital circuits

Layout:



Possible Applications:

- Motor Inverter control
- Short-,long-term data logging
- Model-based battery management
- *User Interface*
- ...

<i>Dimensions:</i>	
Length:	115 mm
Width:	95 mm

Available Daughter-boards:

- D/A converter
- Resolver interface for high speed drives up to 50.000 rpm
- SD-Card Slot and GPS receiver
- Graphical Display
- Isolated IGBT-Drivers for inverter
- Mixed configured boards for special purposes developable

Development and sales in collaboration with:

aeras GmbH
 Erzstrasse 22, 38678 Clausthal-Zellerfeld, Germany
 mail: info@aeras.de, web: <http://www.aeras.de>

Contact and further information:

Prof. Dr.-Ing. C. Sourkounis
 Ruhr-University of Bochum, Power Systems Technology and Power Mechatronics
 Universitaetsstrasse 150, 44780 Bochum – Germany
 mail: mail@enesys.rub.de, web: <http://www.enesys.rub.de>